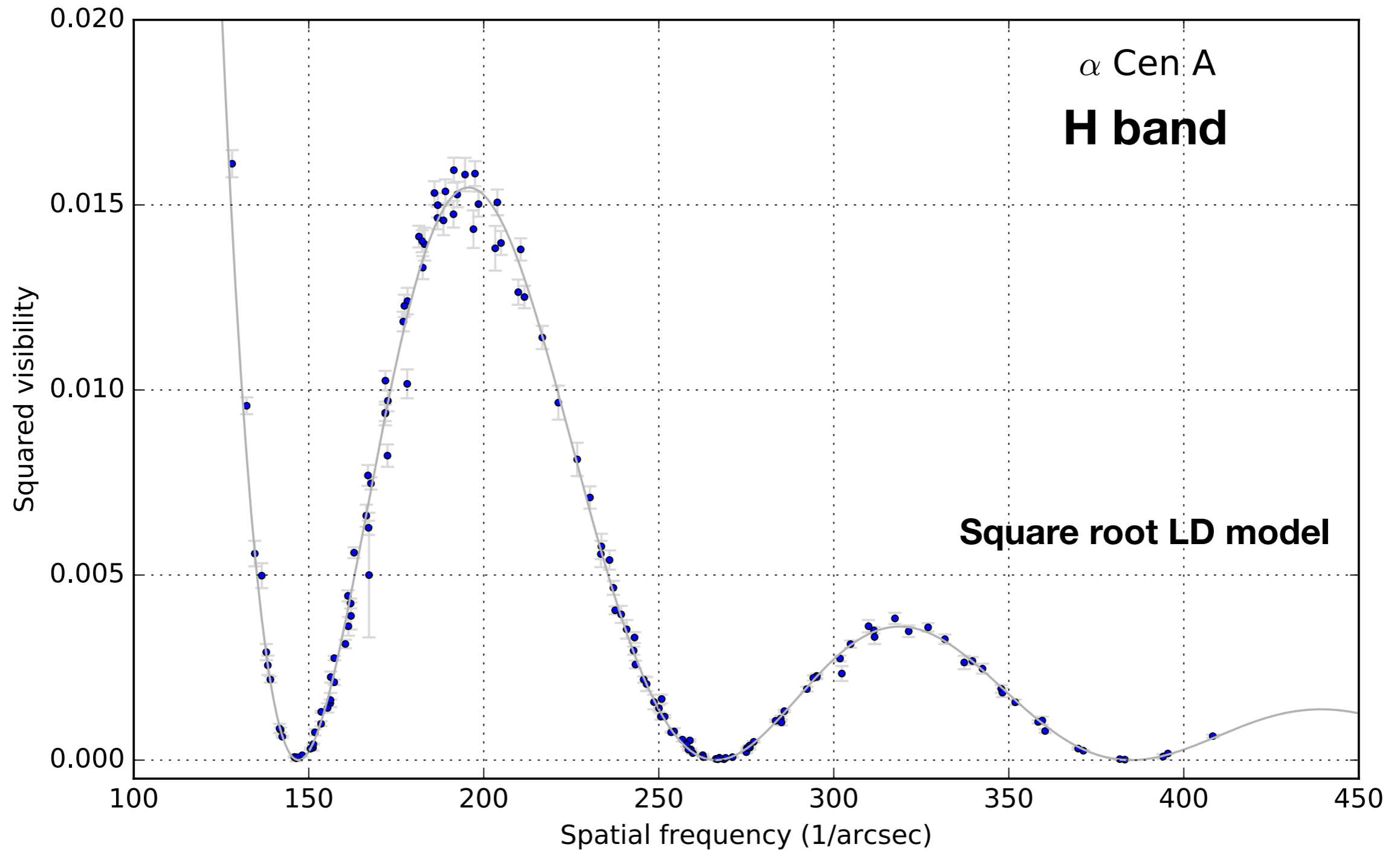
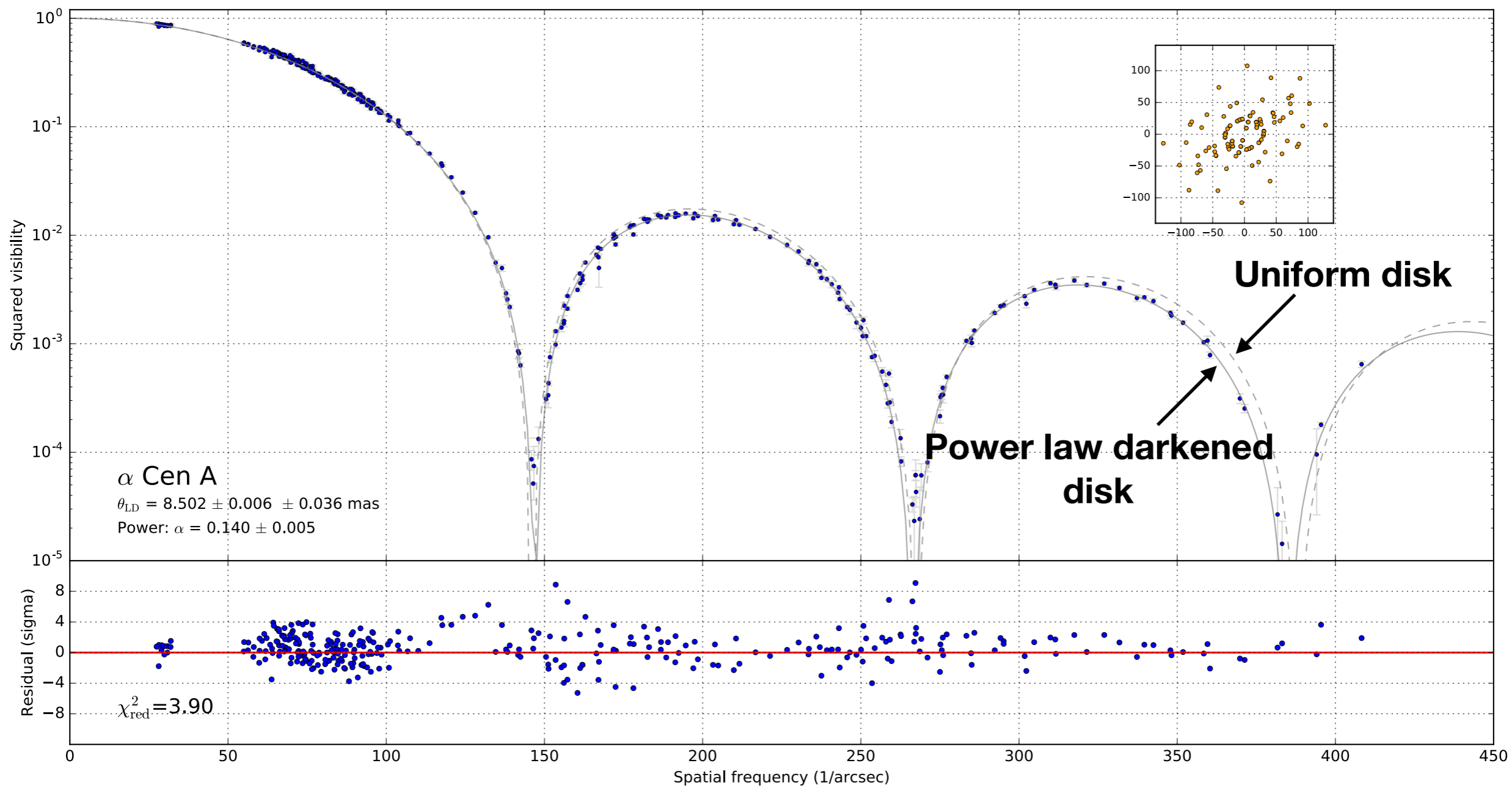


# Limb Darkening

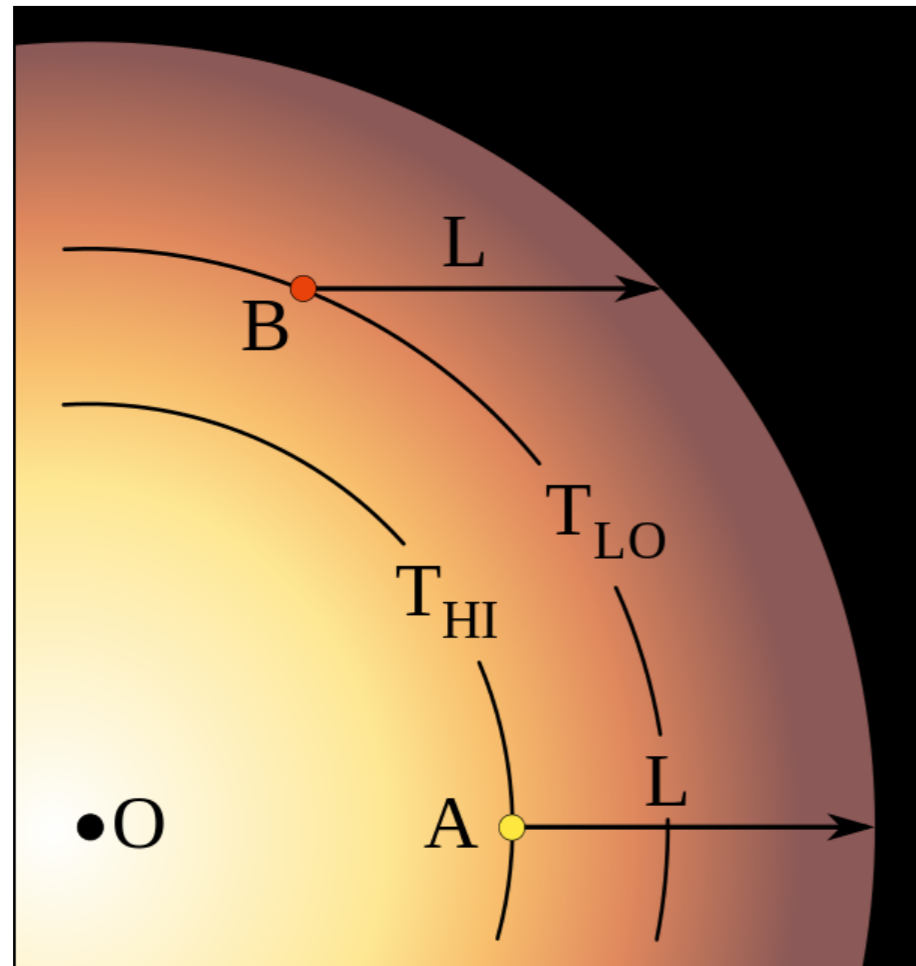
Pierre Kervella

# VLT/PIONIER observations

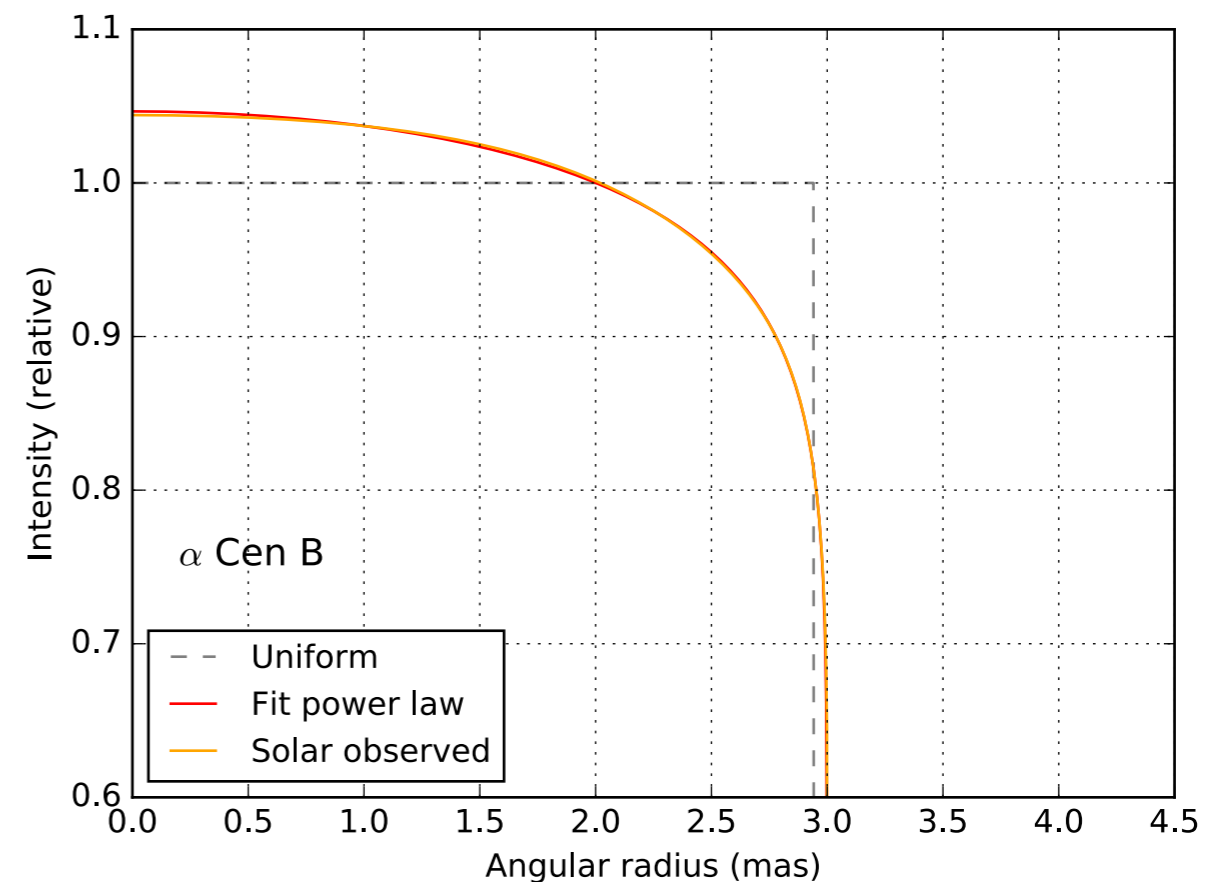
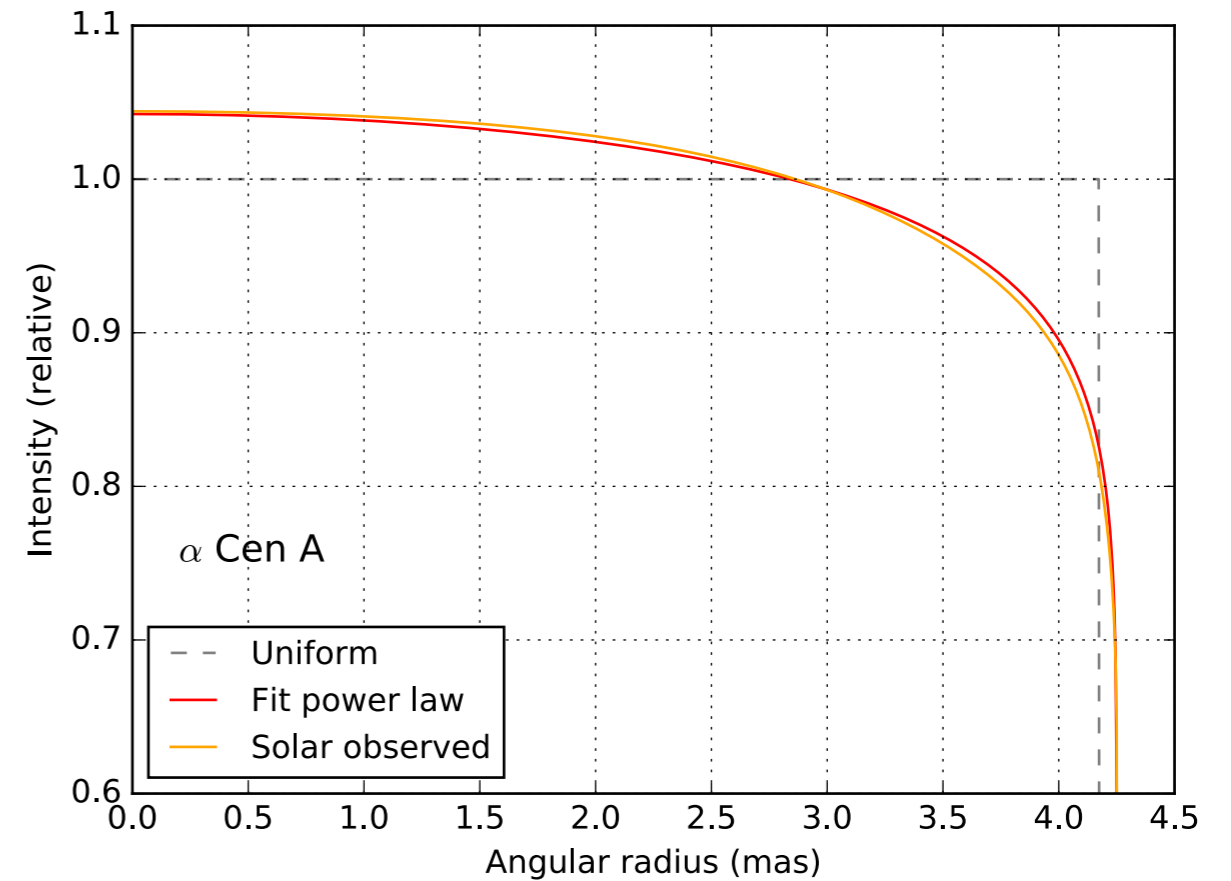


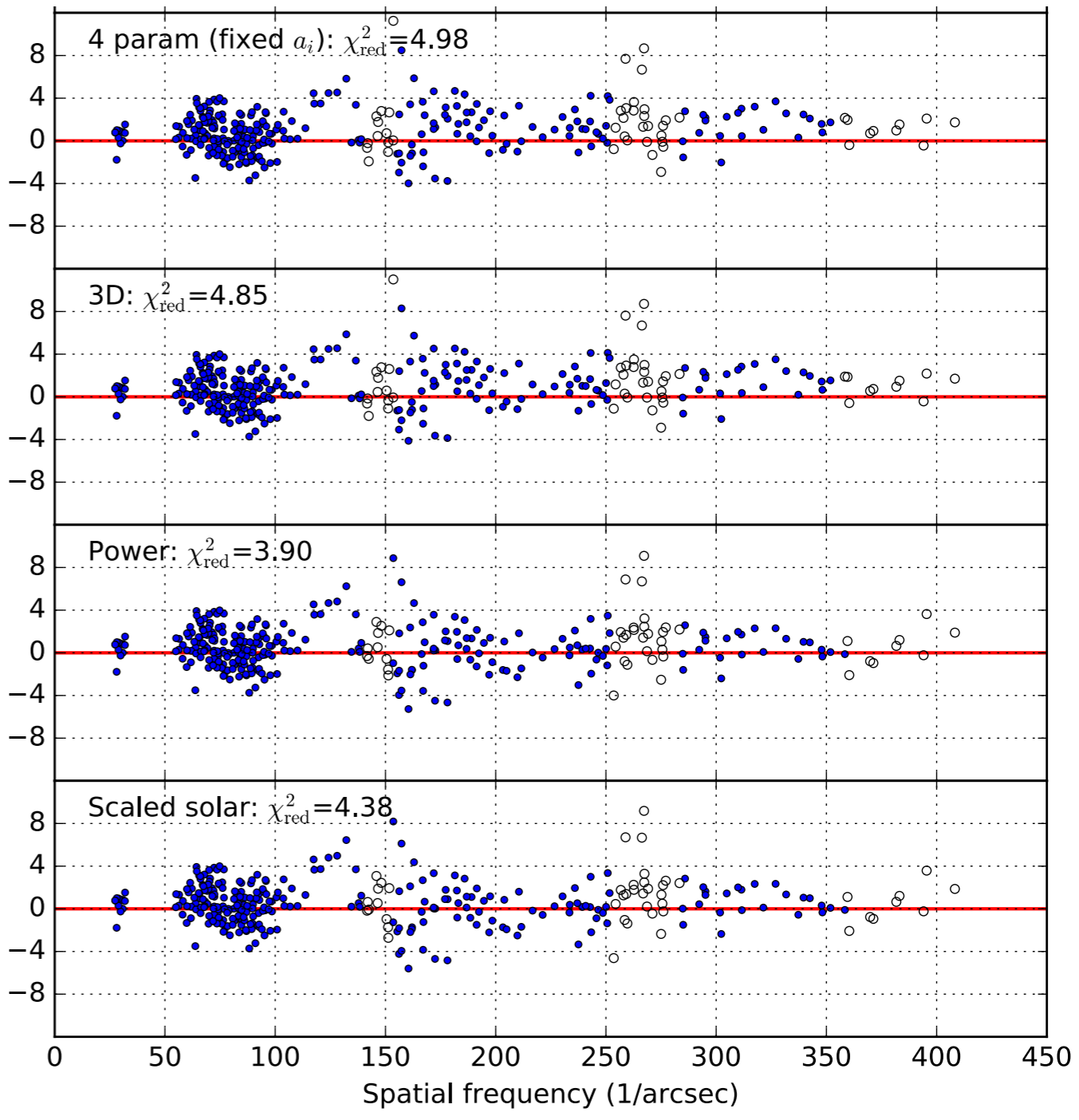
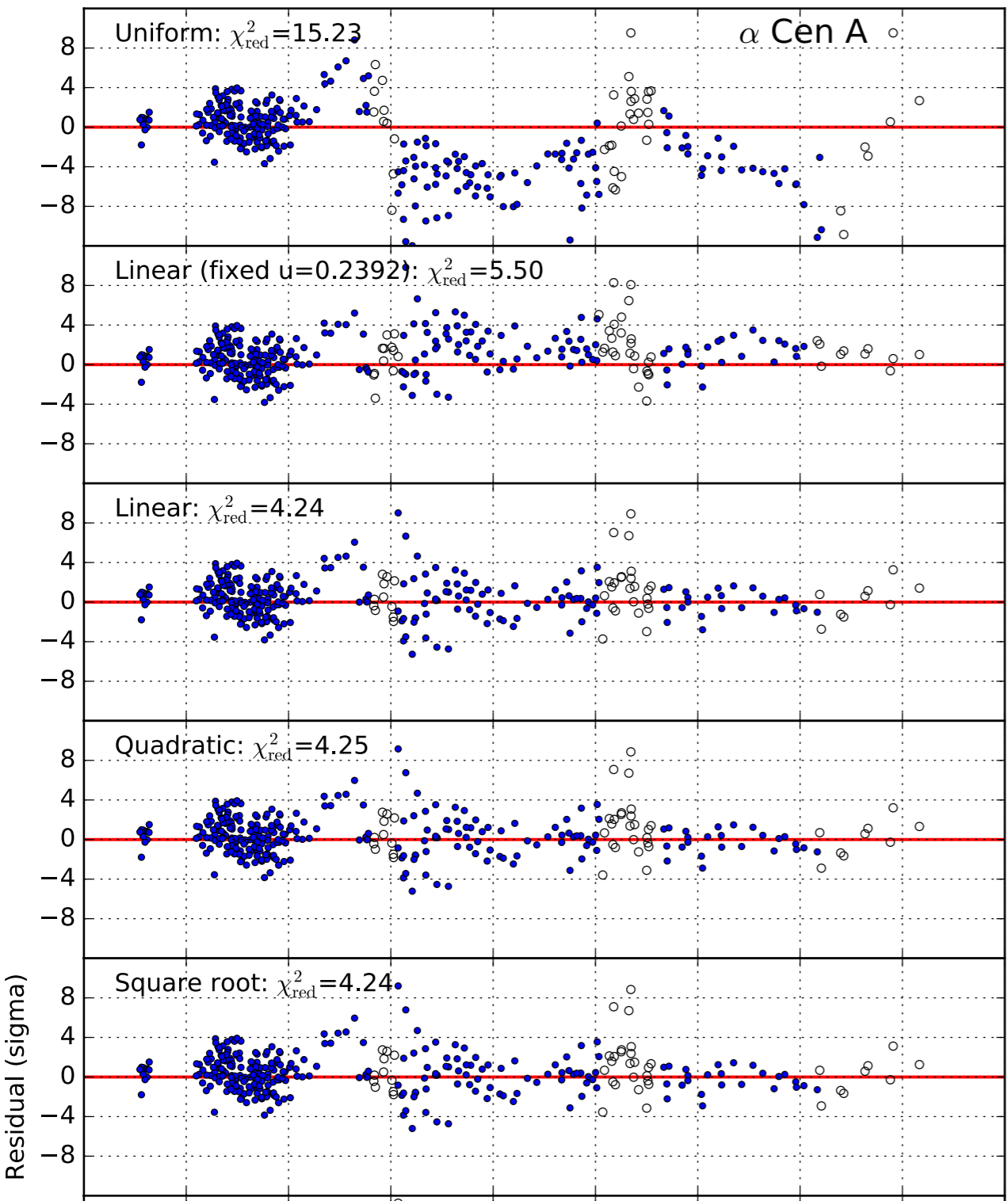


# Limb darkening (infrared)

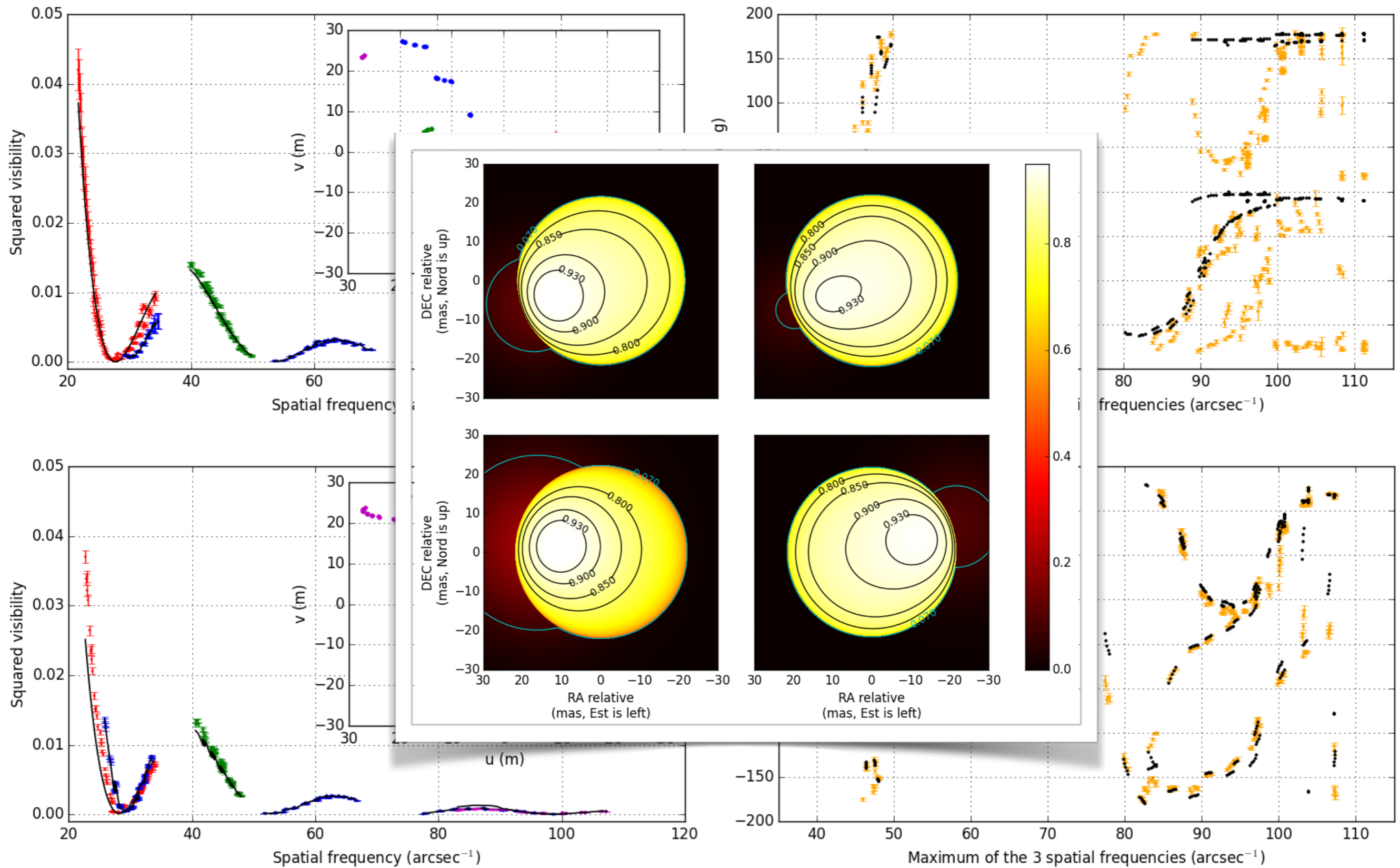


- Residuals are significant and point at a poor knowledge of the opacity of the H<sup>-</sup> anion

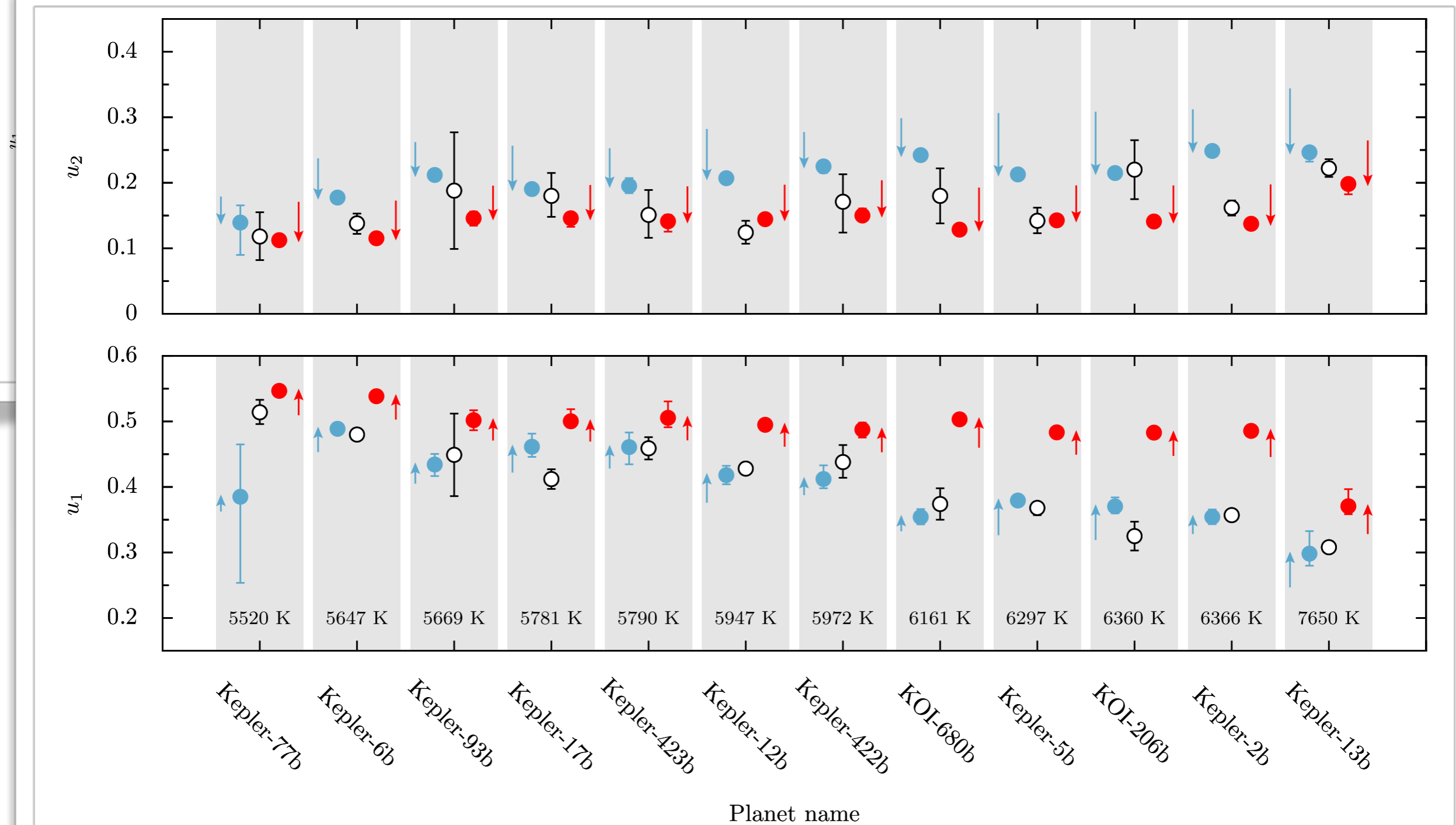
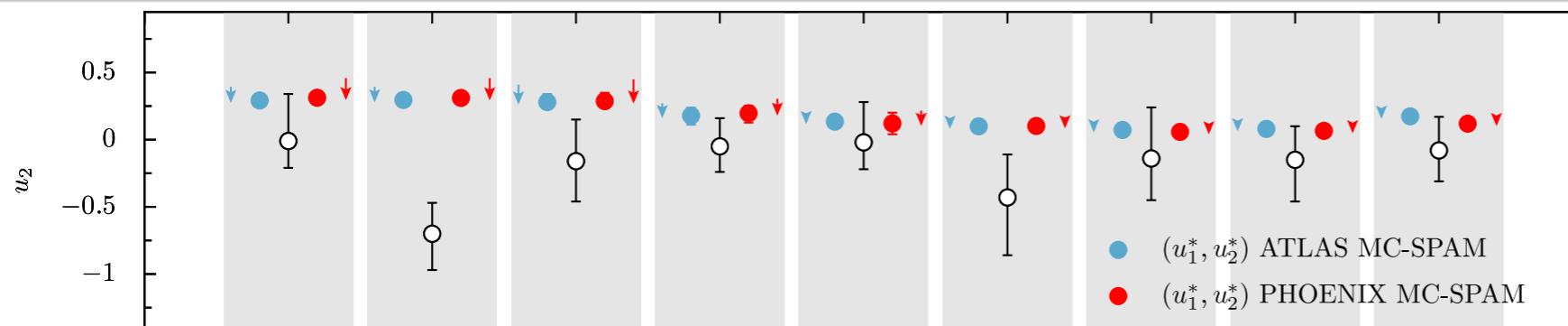




# Betelgeuse / PIONIER



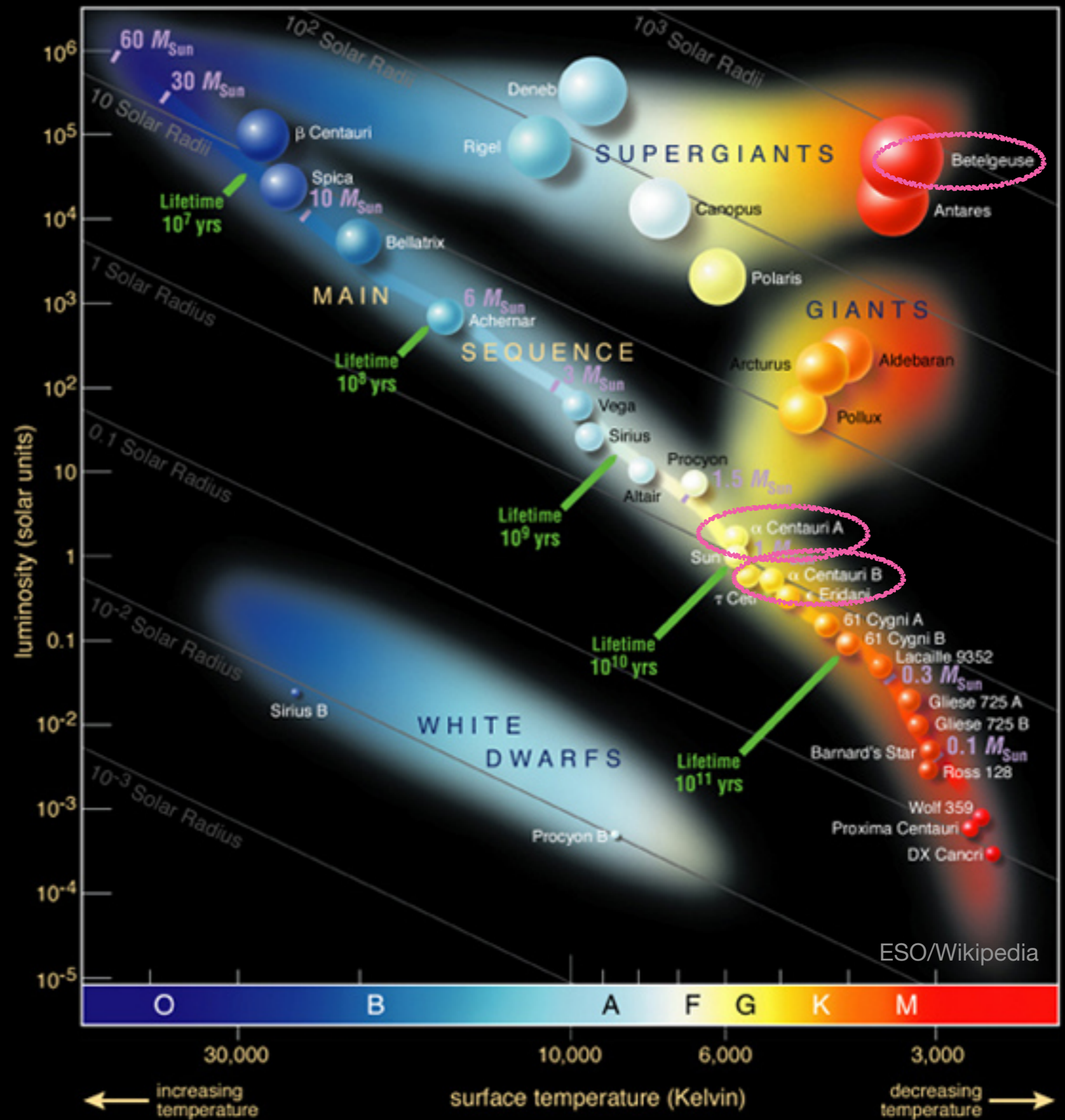
# Kepler exoplanet transits

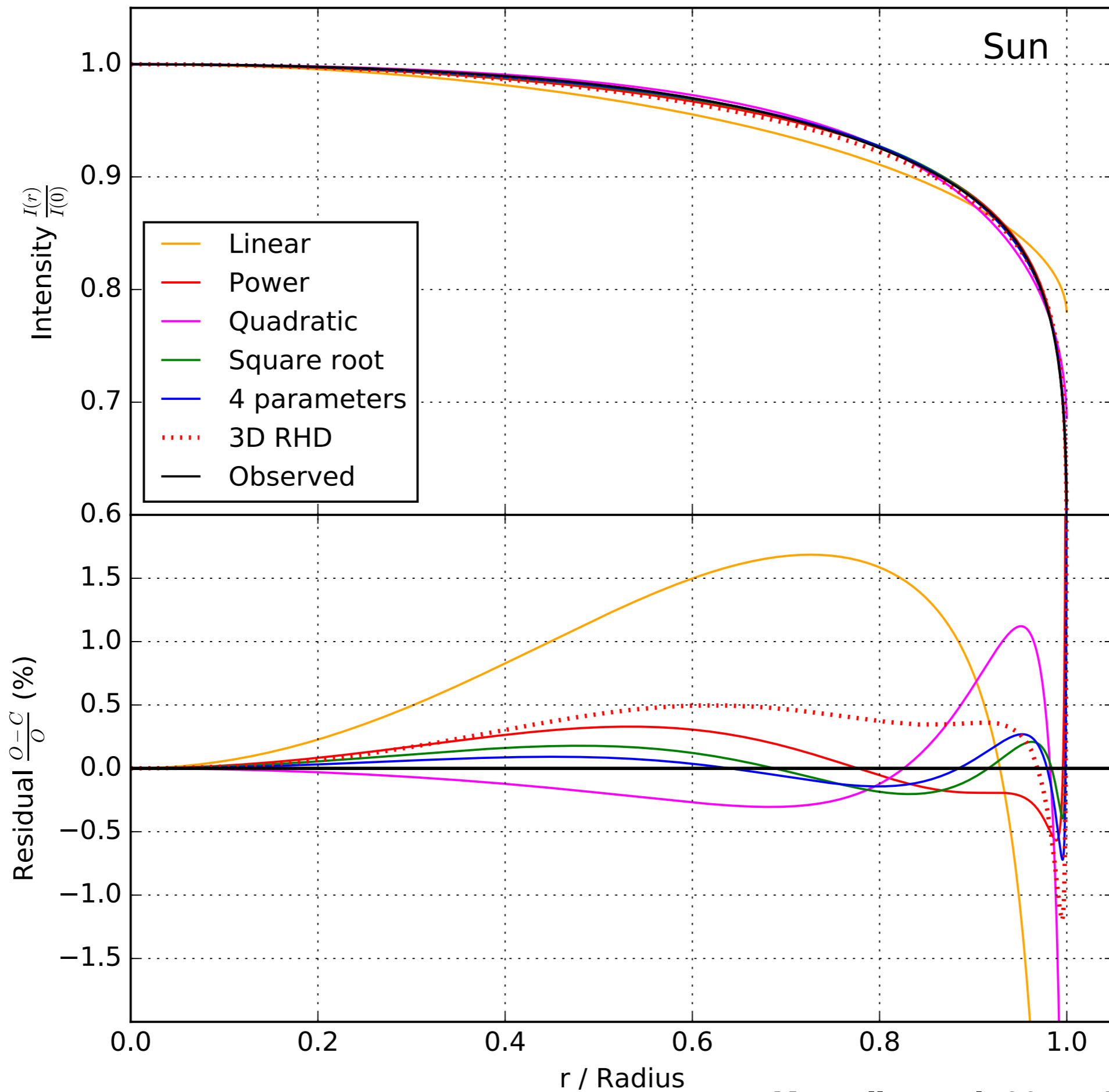


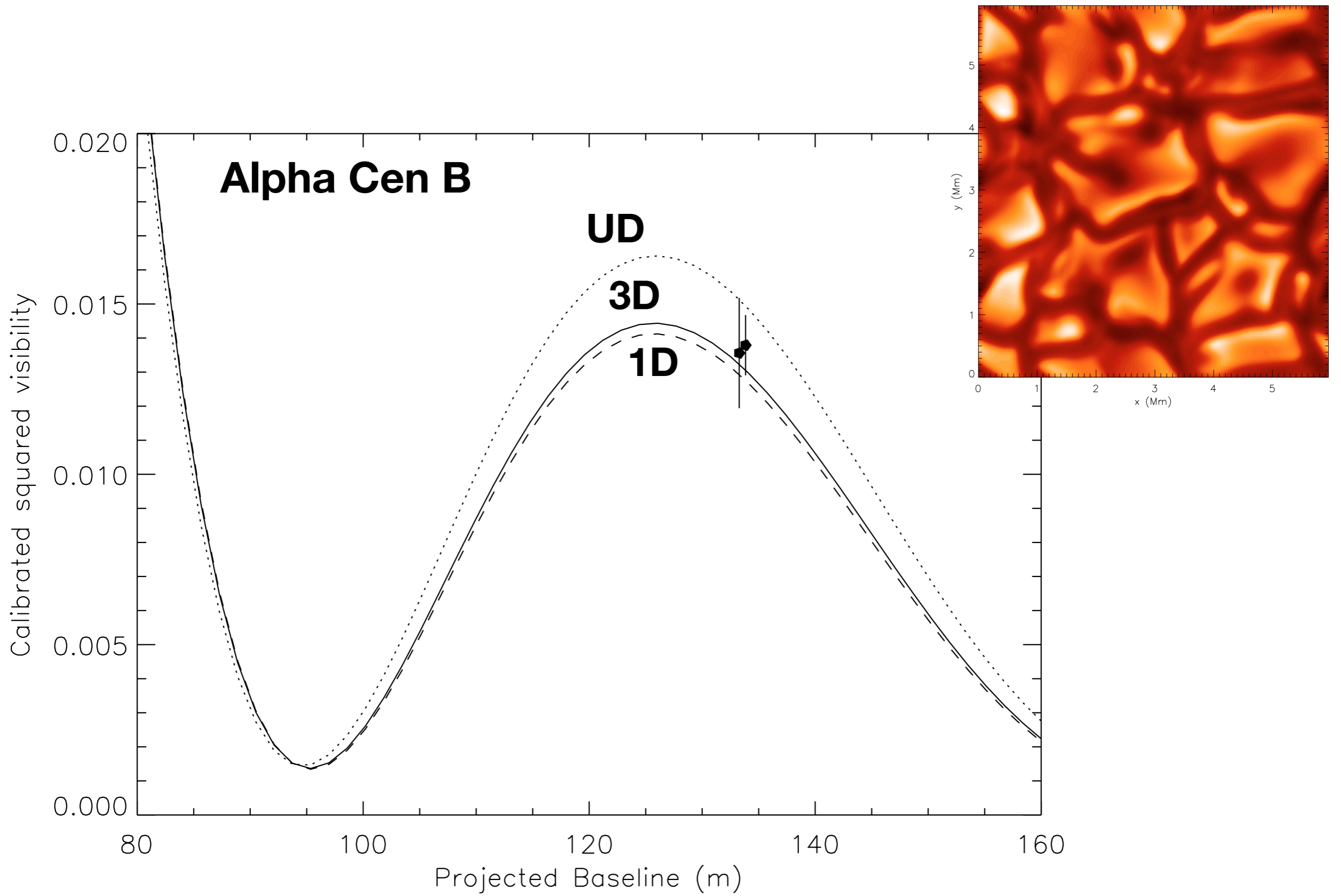




- $\alpha$  Cen A: solar-like G2V, a bit bigger and more massive, a bit older
- $\alpha$  Cen B: cooler, less massive than Sun, K1V dwarf
- Betelgeuse: red supergiant







# Antares / PIONIER

